

## MOTION ON LANDSLIDE AND EROSION IN OGWUMA AND NGUZU EDDA IN AFIKPO SOUTH LOCAL GOVERNMENT AREA, EBONYI SOUTH SENATORIAL DISTRICT, EBONYI STATE

**Sponsor:** Senator Michael Ama Nnachi, Ph.D (Ebonyi South Senatorial District, Ebonyi State).

### **The Senate:**

*Notes* with great concern the landslide and erosion which occurred in Ogwuma Edda and Nguzu Edda both in Afikpo South Local Government Area, Ebonyi South Senatorial District, Ebonyi State claiming many houses;

*Notes* that the landslide and erosion were as a result of denudation and consistent torrential down pour within the area;

*Aware that* these roads connecting the affected communities are the major roads that connects the communities with other neighbouring towns, the state capital and other neighbouring states especially Abia.

*Also aware that* economic and commercial activities of the affected communities are in jeopardy, even human movement are in great danger.

Observes that the havoc wreaked on these communities by the landslide, erosion also completely cut off sister communities; Oso, Owutu, Nguzu, Ohafia in Abia State and Ebunwana, Ogwuma, Ekoli communities.

*Note that* the Oso-Owutu-Nguzu road is the only Federal Government Road, which was awarded for construction since 2012, which the current Minister of Works inspected and promised that the road will be completed in 2020, but today the road has become a death trap.

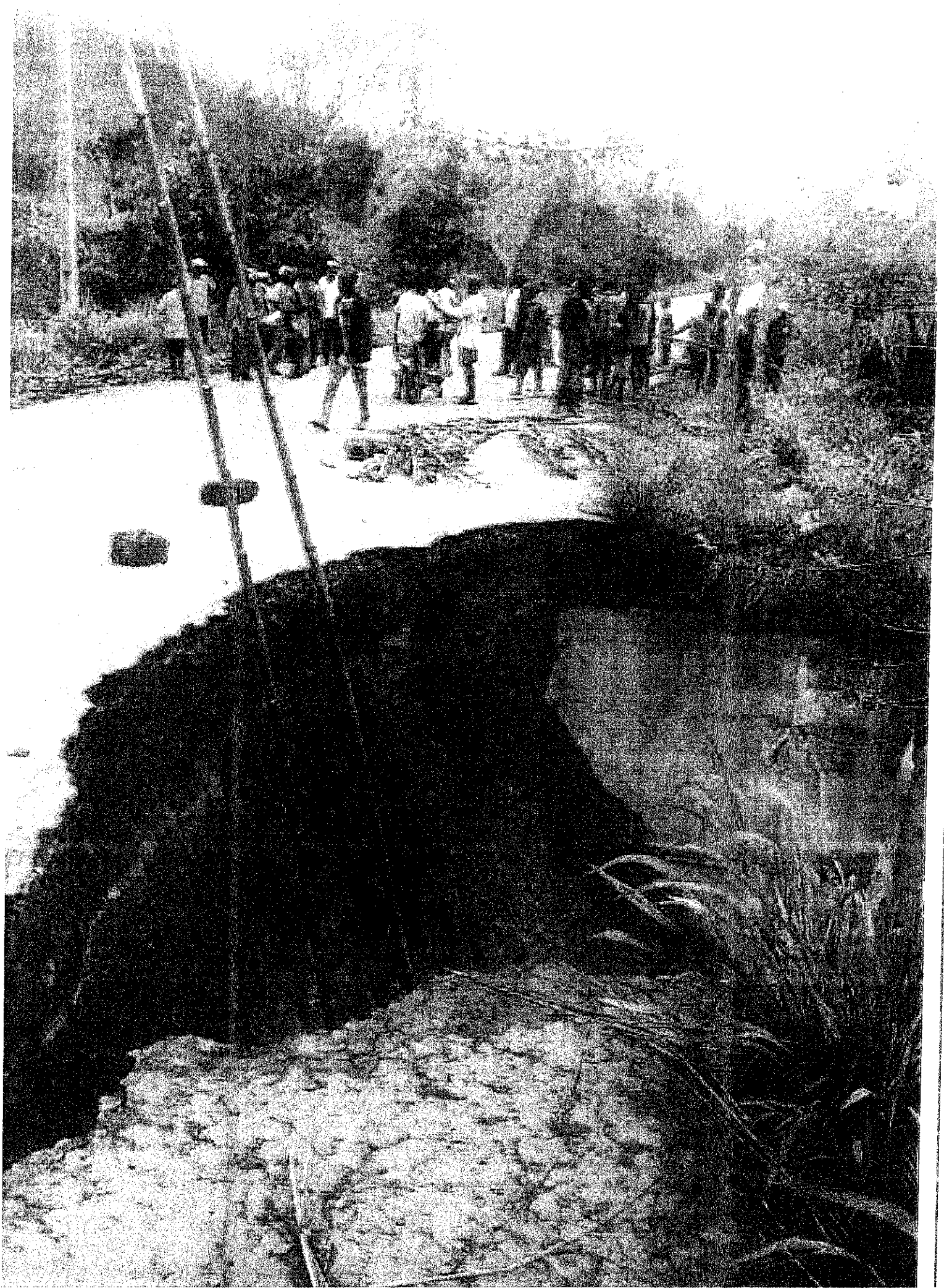
*Concerned that* as result of the consistent rain, the inhabitants of these communities are in grave danger, after being rendered homeless and properties worth millions of Naira destroyed.

*Perturbed that* the victims have migrated to neighbouring communities to seek refuge, thereby exposing them to untold hardships, poverty and socio economic hazards;

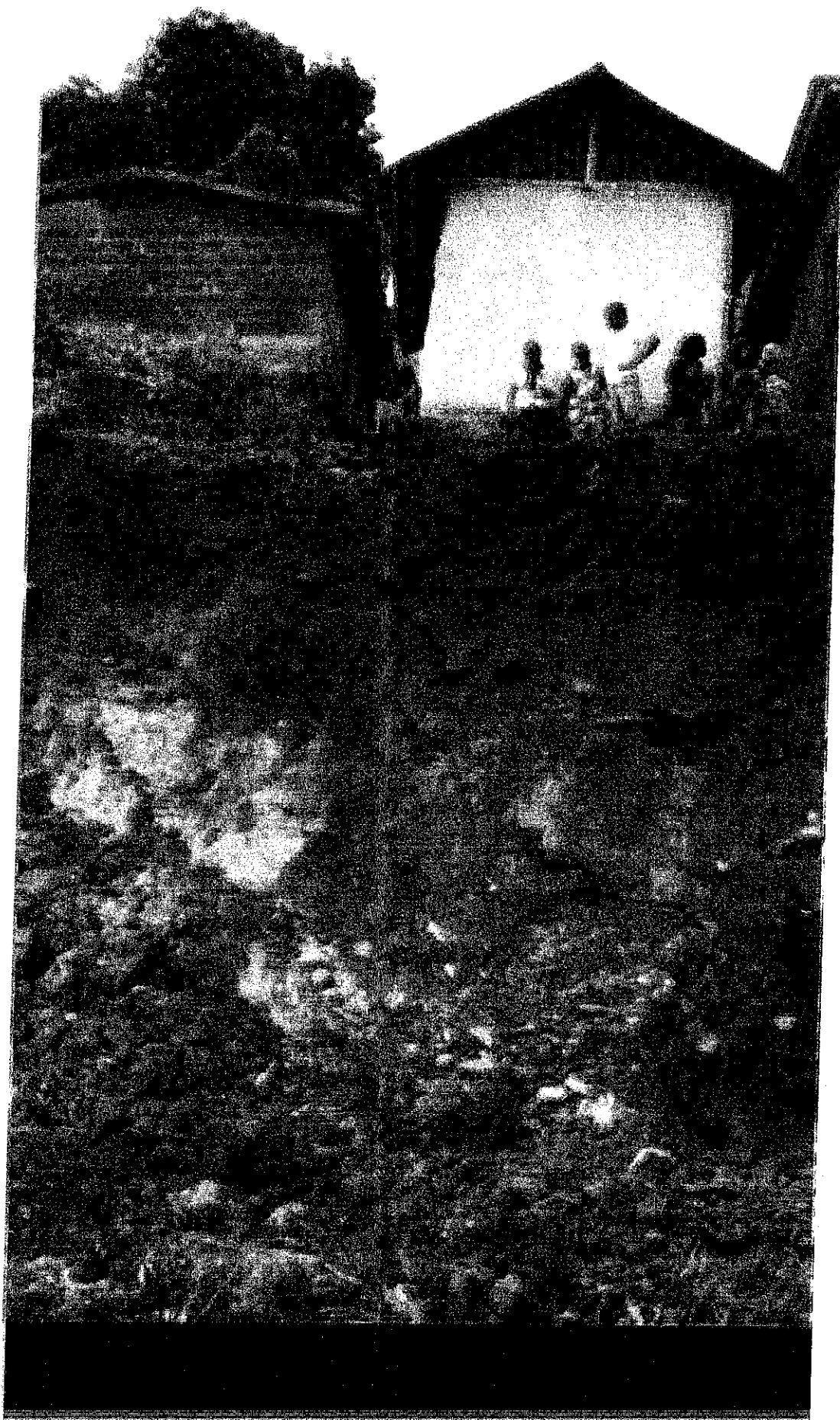
Accordingly resolves to;

- i. Urge the Federal Ministry of Works to urgently intervene by ensuring the completion of the road
- ii. Urge the National Emergency Agency (NEMA) to urgently assess the affected people and send relief materials to the victims
- iii. Urge the Federal Road Maintenance Agency (FERMA) to take palliative measures on the affected roads to enable the inhabitants gain access to their homes and
- iv. *Urge* the Ecological Fund to act immediately to restore the situation in Ogwuma Edda community landslide as so many homes have been submerged into rubbles.

OSO - OWUTU - NGUZU - OHAFIA ROAD



Ogwuna Edda landslide



Ogwuna Edda landslide

